

# User Manual

## SLAG



## HOG

66100 Slag Removal Tool for use on laser cutting machines with  
minimum 1.75" between slats

 **SlatPro**



## 1. Description

The tool is moved along the slats on the bed of a laser machine to remove slag that accumulates while cutting. Rotary cutting tools ride on each side of the slat to lift and remove the slag. It may be used on steel, copper or hybrid steel/copper slats. When not in use it may be rolled along the floor and stored in the upright position.

## 2. Specifications

Voltage	120V 60 Hz single phase
Current	7 Amp max
Weight	44 pounds
Overall Length	92"
Slat Thickness	.074 - .250"
Slat Length	49-80"
Min spacing between slats	1.75"

### Replacement Cutters

- 66106 – 14ga Slats
- 66031 – 11-12ga Slats
- 66105 – 10ga Slats
- 66095 – 7ga Slats
- 66096 – .250" Slats

## 3. Initial Assembly

The Slag Hog ships in two pieces; power unit and the handle assembly. All fasteners are metric.

- Remove the acorn nuts and button head socket screw from the 1.36" diameter stub on the power unit
- Slide the handle on the stub with the power out cord of the handle on the same side as the plug in on the power unit.
- Plug the power cord into the power unit
- Do not plug in to power before verifying the switches on the handle and power unit are off: red palm button pushed in and rocker switch to 0.

## 4. Operation

Before plugging into power verify that the two switches are turned off

Wear work gloves and safety glasses when operating

Lift onto the machine with care

Use extreme care near the cutters. Do not touch them unless the tool is unplugged

The tool has two on/off switches



Red push button. Push in to turn off

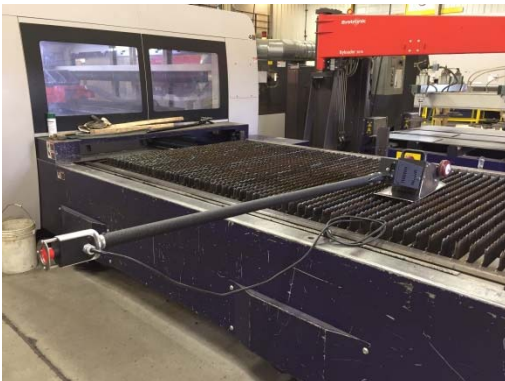


Rocker Switch on power unit in off position. Circuit breaker reset switch

Both switches must be in on position to run. Turning either switch off stops motor operation.

The upper right picture shows the white reset button for the circuit breaker. If the slats are not straight it is possible for the cutters to grab onto two slats and stall the motor which will trip the breaker. If this occurs wait a minute, reset the breaker, and resume operation. When slats have a lot of slag build up it may cause the circuit breaker to overload. If this happens the operator will need to reduce force used for cleaning slats. If this occurs wait a minute, reset the breaker, and resume operation.

To begin use, place the tool on the slat bed of the laser machine



With switches off plug tool in



Cutters shown centered on slat

To see the unit in operation, go to Youtube and search for Slaghog. The best video is:  
<https://www.youtube.com/watch?v=PDvEFRREdgg>

The cutter geometry is ideal for most slat/pallet bed configurations. If the fit of the cutters slats does not seem correct contact the factory to find out options that are available.

## 5. Maintenance

**Disconnect power by unplugging from outlet before performing any work on the tool**

### 5.1 Cutters

The cutters will dull over time and require replacement.

Tools required for replacement

- 6mm L Hex wrench

- 6mm male hex socket wrench
- Adjustable open wrench

Parts required are 66031 RH & LH Cutters with capscrews

Place the tool on its back with the cutters up



Place the wrenches as shown and remove the right cutter cap screw with counter clock-wise rotation. Remove the right cutter.



Place adjustable wrench on flats of right shaft and remove left cutter with ccw rotation



Slide the new right hand and left hand cutters so that the flats between the shaft are facing the base plate as shown. The cutters rotate so that the slag chips are pulled up toward the base plate. The cutters must be installed as shown.

Tighten new cutters with new capscrews and washers using the male hex socket wrench and L hex wrench approach.

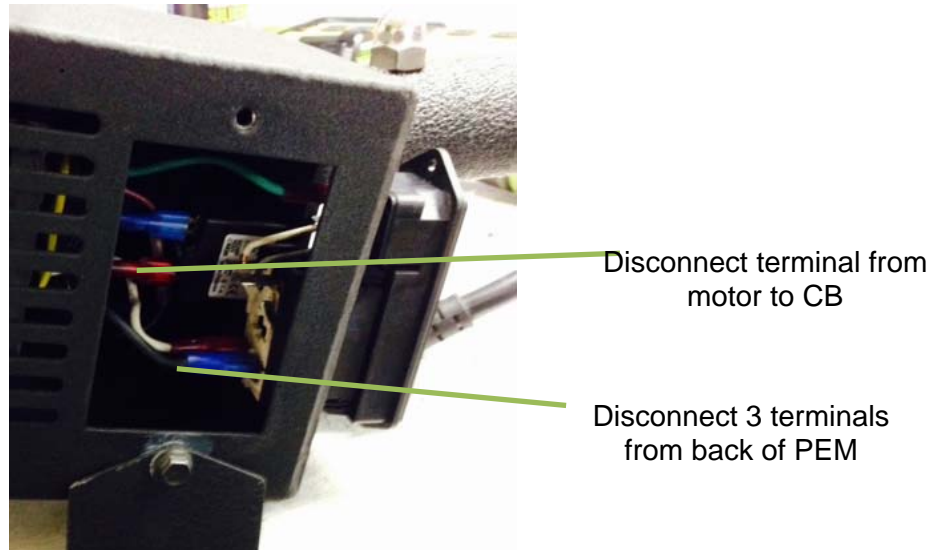
## 5.2 Motor Brushes

If the motor doesn't rotate under power without load it is likely that the brushes need replacement. The following instructions show replacement of the **66125 Carbon Brush Kit**.

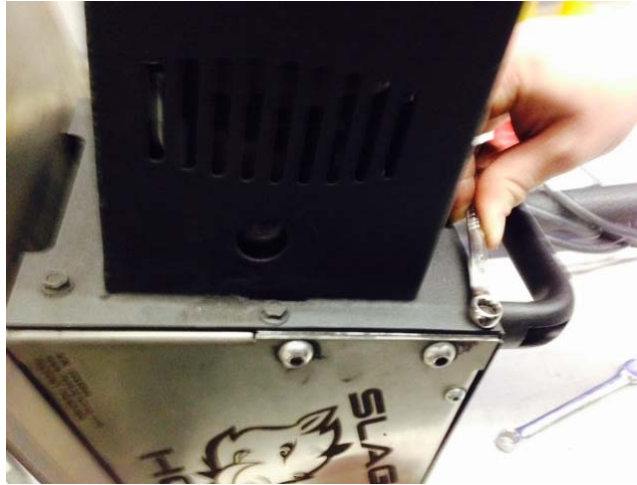
- Remove two 10mm bolts from handle and remove
- Remove Stop Bolt
- Remove two small screws from Power Entry Module
- Remove two hex head screws from Access Cover



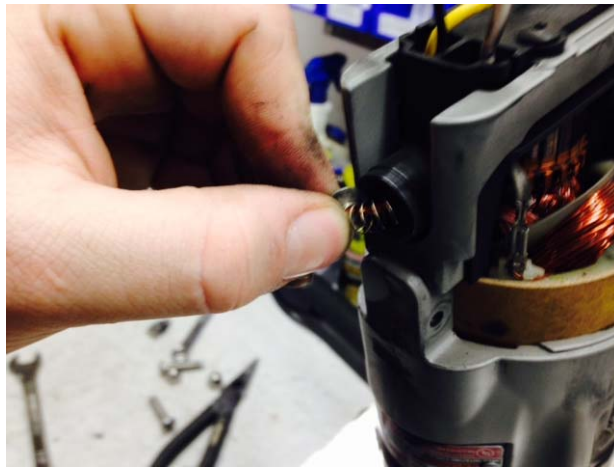
Disconnect three wire terminals from Power Entry Module(PEM). Use needle nose pliers to pull on terminal. Do not pull on wire.  
On Circuit Breaker(CB) disconnect terminal for black wire from motor



Remove 6 hex head screws that attach motor enclosure to mechanism. Remove motor enclosure.



Unscrew plastic cap for the brush. Remove old brush and replace with new brush. Thread in cap and repeat for other side.



Reinstall Enclosure, reconnect four terminals, reattach PEM, thread in stop bolt and replace cover. Replace handle and put back in service.

### 5.3 Other maintenance

All other repairs require qualified personnel to perform. In this case the factory or distributor should be contacted for further instructions.



## **SLAGHOG WARRANTY**

www.slatpro.com

Subject to the exclusions described below, all Slaghog products ("Products") as manufactured by Slatpro LLC are warranted to be free from defects in materials and workmanship under normal use and service for 12 months after the ship date to the purchaser. Unless otherwise set forth in a quotation or agreed to by Slatpro in writing, Product warranty only applies to the first using purchaser. Warranty is not transferable beyond the first using purchaser and is limited to new Products sold by Slatpro or through authorized representatives and channel partners.

**EXCLUSIVE REMEDY.** In the event that Slatpro determines that a Product contains a defect in materials or workmanship, then Slatpro, in its sole discretion, will (a) repair the Product, (b) replace the Product with new or rebuilt (c) refund the purchase price of the Product. THIS LIMITED WARRANTY IS EXCLUSIVE AND IS IN LIEU OF ALL OTHER EXPRESS AND IMPLIED WARRANTIES, INCLUDING BUT NOT LIMITED TO THE IMPLIED WARRANTIES OF MERCHANTABILITY AND FITNESS FOR A PARTICULAR PURPOSE. THE REMEDY OF REPAIR, REPLACEMENT OR REFUND IS BUYER'S SOLE AND EXCLUSIVE REMEDY UNDER THIS WARRANTY. IN NO EVENT SHALL SLATPRO'S LIABILITY UNDER THIS WARRANTY EXCEED THE PURCHASE PRICE OF THE PRODUCT GIVING RISE TO THE WARRANTY CLAIM. All Products which are repaired or replaced shall be warranted only for the unexpired portion of the original warranty period.

**EXCLUSIONS.** This warranty does not cover (a) any failures which are not attributable to defects in materials or workmanship, including without limitation, failures caused by accidents, inadequate maintenance, misuse, unauthorized modifications or repairs, improper storage, and normal wear and tear, (b) any consumable parts or accessories, such as cutter blades, are designed to wear over time or through use of the product, (c) Excessive use which is contributed from overuse, recommended use is for 1 cleaner to service 1-3 machines under normal use conditions. Recommended cleaning interval of once per week if production levels equal 2 shifts.

**WARRANTY RETURNS.** No Products shall be returned without prior authorization from Slatpro. Buyer shall prepay all shipping charges for the return of Products to Slatpro designated service location.

**LIMITATION OF LIABILITY.** IN NO EVENT SHALL SLATPRO BE LIABLE FOR ANY INCIDENTAL DAMAGES, CONSEQUENTIAL DAMAGES, SPECIAL DAMAGES, INDIRECT DAMAGES, LOSS OF PROFITS, LOSS OF REVENUES, OR LOSS OF USE, EVEN IF INFORMED OF THE POSSIBILITY OF SUCH DAMAGES. SLAPRO'S LIABILITY FOR DAMAGES ARISING OUT OF OR RELATED TO ANY ORDER IS LIMITED TO THE ORDER PRICE FOR THE SPECIFIC PRODUCT THAT GIVES RISE TO THE CLAIM. TO THE EXTENT PERMITTED BY APPLICABLE LAW, THESE LIMITATIONS AND EXCLUSIONS SHALL APPLY REGARDLESS OF WHETHER LIABILITY ARISES FROM BREACH OF CONTRACT, WARRANTY, TORT (INCLUDING BUT NOT LIMITED TO NEGLIGENCE), BY OPERATION OR LAW, OR OTHERWISE.

Effective Date: January 1, 2017



# Slag Hog Assembly

**P/N: 66100** Model SH1

Item	Qty	Part No.	Description	sheet 1 of 2
The following items are for the drive portion of the assembly				
1	1	66032	Drive Shaft	
2	2	66034	Cutter Shaft	
3	2	66050	Idler Shaft	
4	1	66033	Driven Idler Shaft	
5	4	66041	Gear Support Plate	
7	2	66040	Cutter Support Plate	
8	1	66042	Pivot End Plate Cutter Side	
9	1	66043	Pivot End Plate Motor Side	
10	1	66044-RH	Top Gear Support RH	
11	1	66044-LH	Top Gear Support LH	
12	2	66025	Spring Guide Male	
13	2	66051	Spring Guide Female	
14	1	66052	Drill Mount Collar	
15	1	66039	Chip Deflector	
16	8	66081	Idler Shaft Washer	
17	4	66082	Shaft Cover	
19	4	66054	Pivot Washer	
20	1	66058	Gear Box	
21	3	66083	Thrust Spacer	
22	2	66053	Spacer, Cutter	
23	4	66048	Spur Gear 14T	
24	2	66049	Spur Gear 16T	
26	20	66115	Needle Bearing .62 ID	
30	2	66126	Die Spring	
31	6		Thrust Washer .62ID 5906K516	
33	4		Machine Key 98870A140	
34	2		Dowel Pin, Pull-out 97175A390	
35	1	66122	Motor	

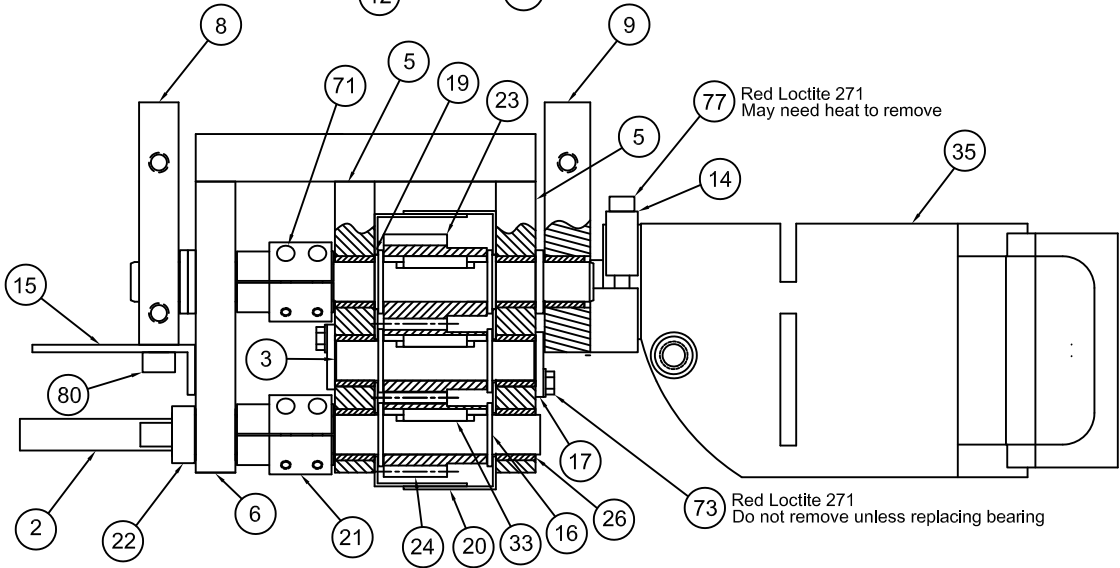
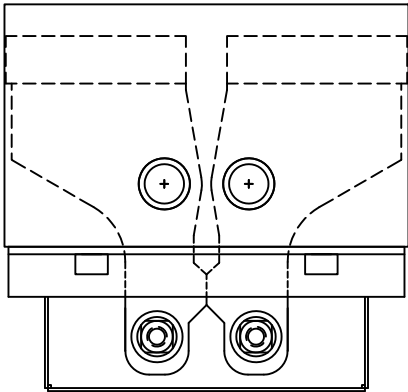
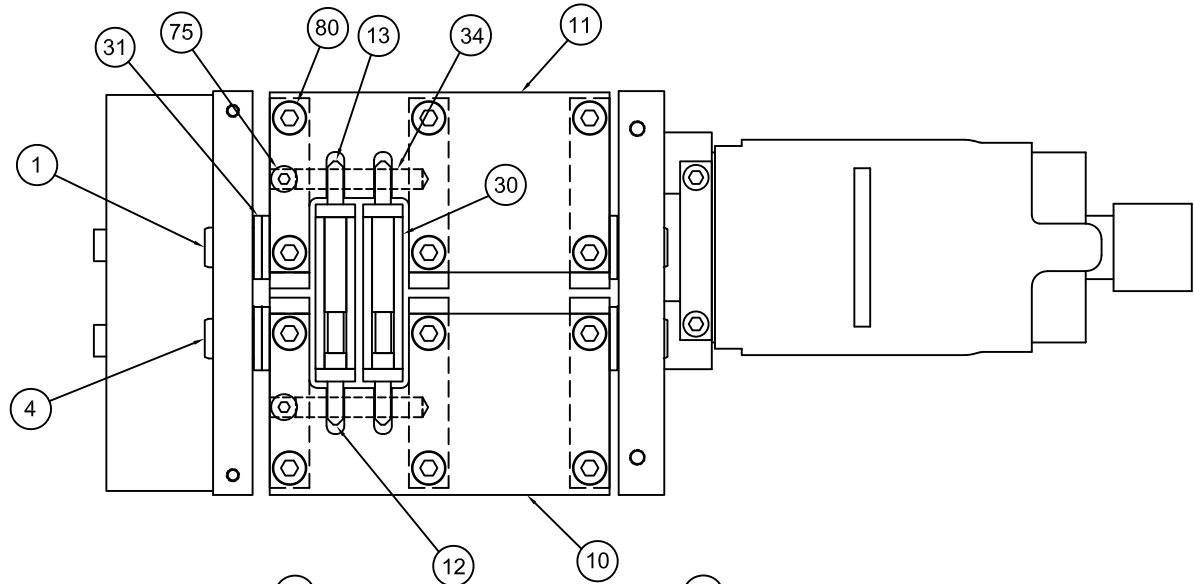




**Slag Hog Assy**  
**P/N: 66100**

Item	Qty	Part No.	Description	sheet 2 of 2
The following items are for the housing portion of the assembly				
40	1	66030-RH&LH	Side Plate Set	
41	1	66035	Base Plate	
42	1	66061	Motor Enclosure	
43	1	66037	Top Cover	
44	1	66059	Stop Bolt	
45	1	66062	Wire Access Cover	
46	2	66117	Wheel	
47	1		Clamp Collar 6157K14	
48	1		Shaft .5 dia x 10.25 1255T17	
49	1	66116	Handle	
50	1	66123	7A Circuit Breaker	
51	1	66118	Power Entry Module	
The following items are for the handle portion of the assembly				
55	1	66060	Handle Tube	
56	1	66063	Handle End	
57	1	66064	Cover, Handle End	
58	1	66065	Guard Handle End	
59	2		Cord Grip 7529K2	
60	1		3/8 Fixture Nut	
61	1	66121	Cord	
62	1	66120	15A Plug End	
63	1	66119	Push Pull Switch	
64	3		Standoff 98952A162	
The following items are for the fasteners				
70	2		Pan Hd Phillips Mach Scr M3x8 90116A153	
71	4		Socket Head Cap Screw M4x14 91290A150	
72	3		Button Hd SCS M5x8 SST 94500A230	
73	16		Vib Resist Hex Hd Flange CS M5x12 92820A215	
74	6		Flat Head SCS M5x12 91263A833	
75	2		Button Hd SCS M6x16 91306A672	
76	2		Socket Head Cap Screw M6x25 90128A265	
77	2		Socket Head Cap Screw M6x50 90128A269	
78	8		Button-Head SCS M8x16 91306A677	
79	14		SHCS M8x25 90128A275	
80	2		Button Hd SCS M10x45 SST 92095A422	
81	2		Acorn Nut SST M10x1.5 SST	

Slag Hog Cutter Sets	
66106 SET	Cutters for 14ga Slats
66031 SET	Cutters for 11 & 12ga Slats
66105 SET	Cutters for 10ga Slats
66095 SET	Cutters for 7ga - 3/16" Slats
66096 SET	Cutters for 1/4" Slats

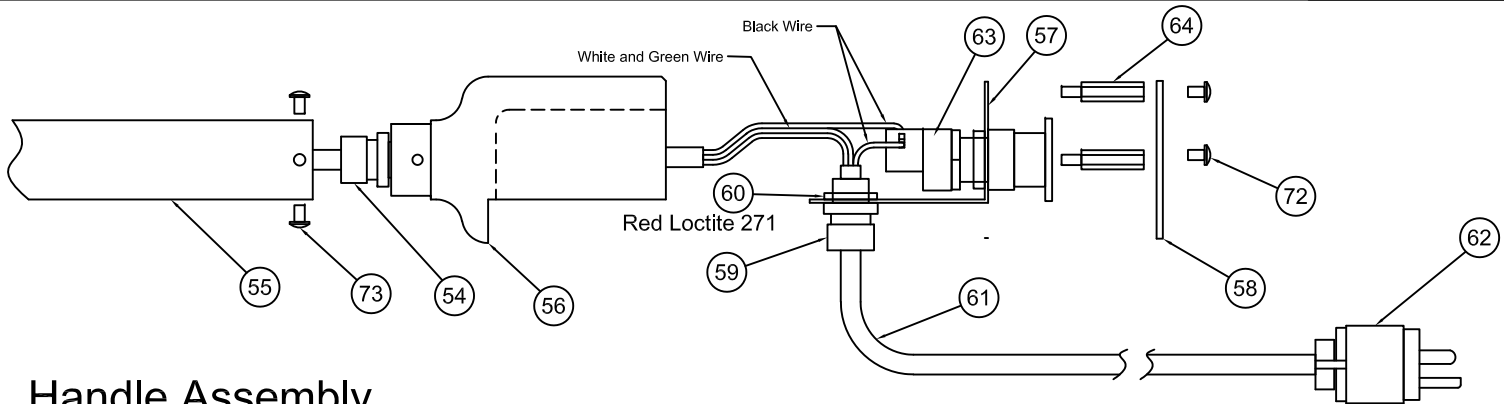


Red Loctite 271  
May need heat to remove

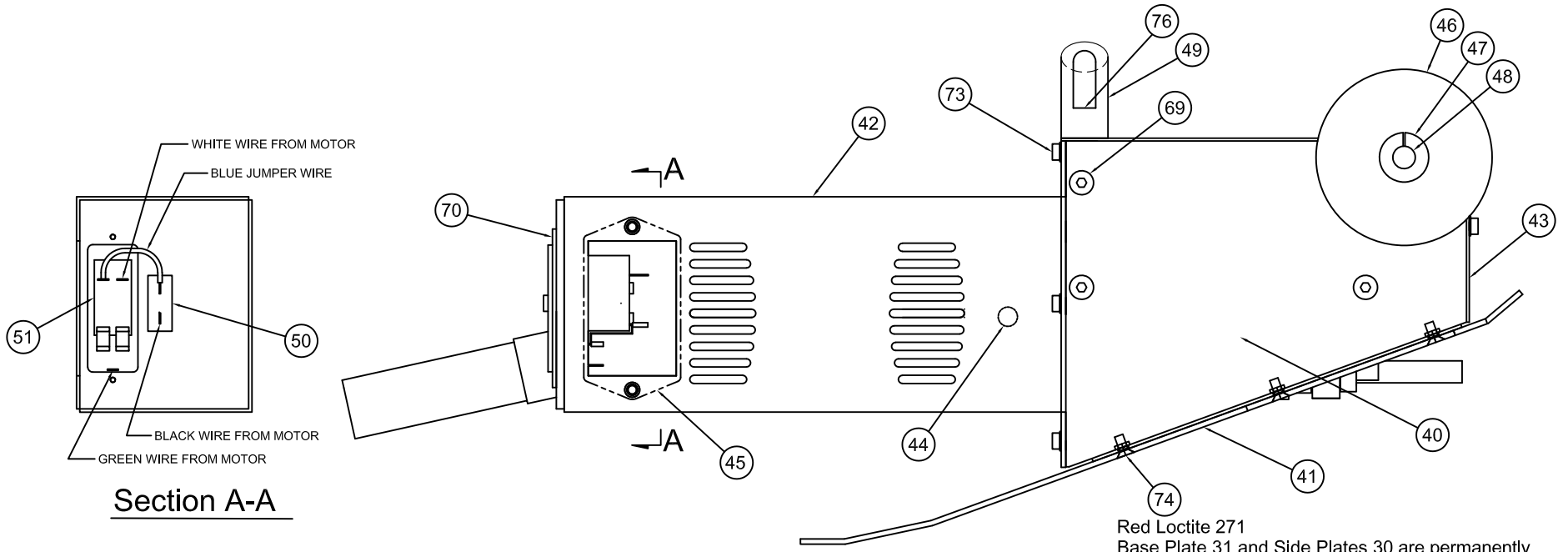
Red Loctite 271  
Do not remove unless replacing bearing

**Drive Assembly**  
Unless noted Blue Loctite 242 on all fasteners

THIRD ANGLE PROJECTION 			TITLE
			Slag Hog Assembly
DO NOT SCALE	SHEET	66100	
<small>ALL DATA AND INFORMATION ON THIS DOCUMENT IS FOR THE SOLE USE OF SLATPRO AND/OR ITS LICENSEES, AND MAY NOT BE USED WITHOUT PERMISSION.</small>	1 OF 2		




Handle Assembly



Section A-A

Drive in Housing Assembly

Red Loctite 271  
Base Plate 31 and Side Plates 30 are permanently assembled together and should not be disassembled

THIRD ANGLE PROJECTION 			TITLE
DO NOT SCALE	SHEET	66100	Slag Hog Assembly
ALL DATA AND INFORMATION ON THIS DOCUMENT IS FOR THE SOLE USE OF SLATPRO AND/OR ITS LICENSEES, AND MAY NOT BE USED WITHOUT PERMISSION.	2 OF 2		